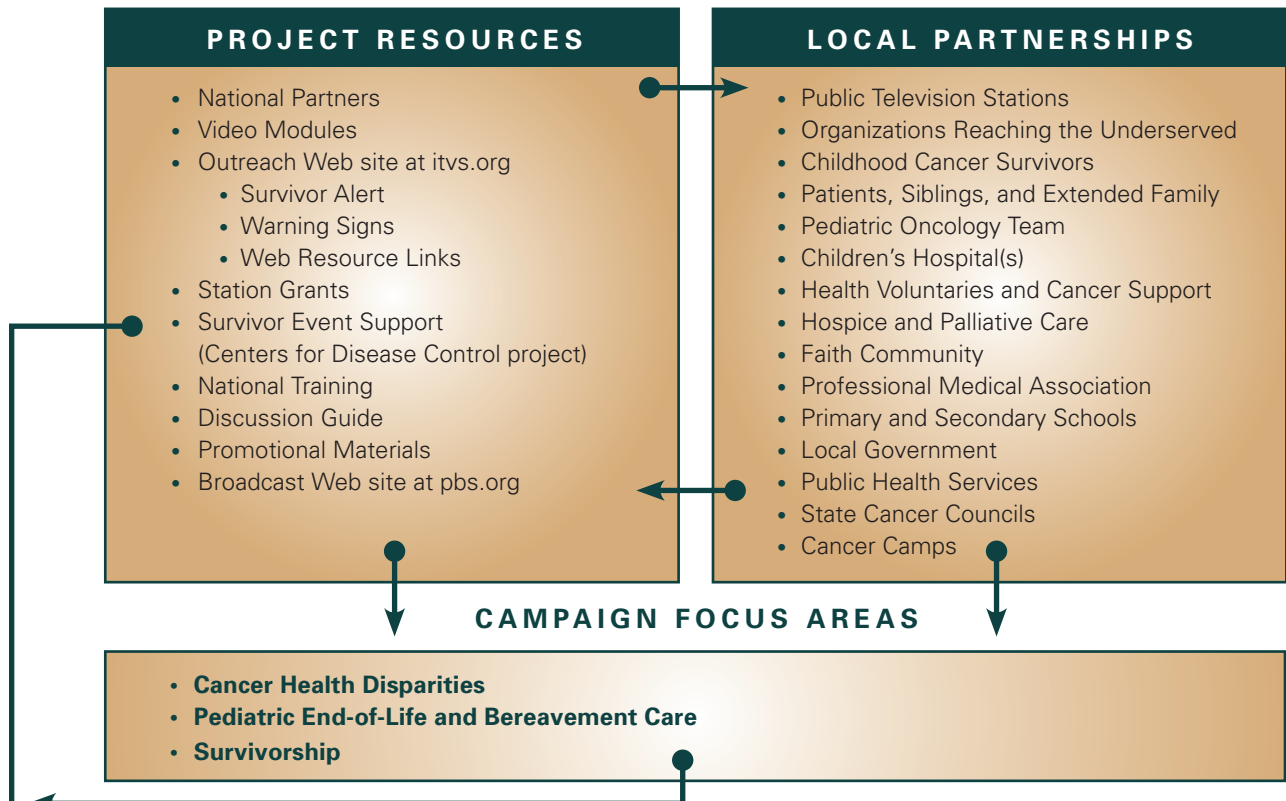


A LION IN THE HOUSE: ITVS Community Engagement Planning Guide



STRATEGIES	ACTIVITIES (Specific Local Activities Planned by Stations & Partners)	SHORT-TERM OUTCOMES Up until time of broadcast, Spring 2006	LONG-TERM OUTCOMES Spring, 2006 broadcast – 6 months following
Establish Local Collaboratives		Local care coordination for families with childhood cancer is established or strengthened	Increase volunteer base and support for organizations serving families with childhood cancer
Identify Childhood cancer resources for: Treatment, Survivorship, End-of-Life, Bereavement		Patients, parents and siblings are connected to culturally competent resources and support	Patient navigation programs are extended to families with childhood cancer
Recruit Child cancer Survivor Spokespersons		Survivors & siblings gain advocacy skills and leadership opportunities	Survivors & siblings have increased opportunities to interact, learn and lead
Disseminate Survivor Alert Plan Survivor Events		Increase patient awareness about the importance of survivor follow up care	Increase the number of young survivors receiving follow-up care
Convene Workshops, screenings, forums And other educational initiatives. Disseminate Warning Signs		Health care providers and school staff gain skills & knowledge in supporting patients and families during treatment, survivorship, end of life & bereavement. Increase professional awareness of childhood cancer warning signs Young people gain knowledge and experience about youth with cancer	Support discussion of policies and practices to: <ul style="list-style-type: none"> • Improve survivor quality of life • Reduce cancer health disparities • Expand resources for pediatric hospice, palliative and bereavement care • Increase culturally sensitive care
Promote through: Media Coverage TV & Radio Programming, Call-in Programming with local experts		Increase public awareness of: <ul style="list-style-type: none"> • The demands of the childhood cancer journey through treatment, survivorship and end-of-life • Cancer health disparities • The need for improved pediatric palliative, hospice and bereavement care 	

For more information: www.itvs.org/outreach/lioninthehouse
E-mail: outreach@itvs.org

